

Inspection Advisory
MSA TopGard® Class E Full Brim Hardhats
with Sonic-bonded Lamp Bracket
 February 2026
PLEASE READ AND TAKE ACTION NOW

MSA Corporate Center
 1000 Cranberry Woods Drive
 Cranberry Township, PA 16066
 800.MSA.2222
 www.MSAafety.com

Dear Valued MSA Customer,

This Inspection Advisory is to inform you of actions you need to take regarding your MSA TopGard Class E Full Brim Hardhats with Sonic-bonded Lamp Bracket. Affected models were manufactured between June 1, 2025 and December 31, 2025 and are listed in Table 1 below.



MSA has found that the dielectric resistance properties of a small number of these helmets may not meet the stated ANSI Z89.1 Type I Class E, CSA Z94.1 Type 1, and NCh 461 electrical classification. The helmets continue to meet the impact resistance requirements of ANSI Z89.1, CSA Z94.1, and NCh 461.

MSA has not received any reports of injuries associated with this condition. However, we are requesting that you follow the actions in this notice as soon as possible.

Table 1: Affected Model Numbers and Helmet Characteristics

Model Number	Material description	Shell Color	Suspension	Cord Holder	Reflective Stripes	Logo
10110829	HAT, TOPGARD, LB & CH, RATCHET, WHITE	White	FT3 Ratchet	Yes	No	No
10119324	HAT, TGARD, RATCHET, YEL, LB/CH SB	Yellow	FT3 Ratchet	Yes	No	No
10119581	HAT, TGARD, RATCHET, RED, LB/CH SB	Red	FT3 Ratchet	Yes	No	No
10147605	SIM TO 10110829 TGARD HAT W/86582 SHELL	Gray	FT3 Ratchet	Yes	No	No
10172085	SIM TO 10110829 TGARD HAT WH LESS CH	White	FT3 Ratchet	No	No	No
10178992	HAT, TOPGARD, WHITE, LB & CH, M**** LOGO	White	FT3 Ratchet	Yes	No	Yes
10182199	HAT, TOPGARD, LB & CH, RATCHET, GREEN	Green	FT3 Ratchet	Yes	No	No
10193664	HAT, TOPGARD, GREEN, LB & CH, RATCHET, M****	Green	FT3 Ratchet	Yes	No	Yes
10248357	SIM TO 10110829 TGD HAT W/ STRIPES L-C/H	White	FT3 Ratchet	No	Yes	No
10261072	SIM TO 448901 T/G HAT GRAY LB	Gray	FT3 Ratchet	No	No	No
10261707	SIM TO 10110829 WT T/G HAT BL LB CH	White	FT3 Ratchet	Yes	No	Yes
10261870	SIM TO 10083817 GRY T/G HAT LB&CH	Gray	FT3 Ratchet	Yes	No	No
10262053	SIM TO 448901 HAT, TPGRD. LAMP BRKT. GRAY	Gray	FT3 Ratchet	No	No	No
448900	HAT, TPGRD. LAMP BRKT. YELL.	Yellow	1-Touch	Yes	No	No
448901	HAT, TPGRD. LAMP BRKT. GRAY	Gray	1-Touch	Yes	No	No
448903	HAT, TPGRD. LAMP BRKT. ORANG	Orange	1-Touch	Yes	No	No
448905	HAT, TPGRD. LAMP BRKT. RED	Red	1-Touch	Yes	No	No

Note: This advisory affects full brim sonic-bonded hardhats only; front brim hardhats are not affected. Screw mount lamp brackets are not affected.

If you are using your hardhat in a potentially high-voltage application and it does not pass the inspection detailed in this Advisory, please contact MSA for a replacement hardhat.

A. Assessing Your Application

If your application involves work around any type of electrical hazards, such as utility work, where dielectric PPE is appropriate, please continue to the next section of this advisory to identify your unit.

MSA Corporate Center
1000 Cranberry Woods Drive
Cranberry Township, PA 16066
800.MSA.2222
www.MSAsafety.com

If your application does not involve work around any type of electrical hazards, no further action is needed.

B. Identifying your Unit

To determine if your device is eligible for replacement, follow the steps below:

1. Verify that your helmet matches the Helmet Characteristics of a Model Number shown in Table 1
2. Locate the date code on the underside of the shell's brim (figure 1)
 - a. The large number inside the circle indicates the year.
 - b. The arrow inside the circle points to the outer ring of numbers that represents the month. (ex. 3 = March, 4 = April)
3. If your **Date Code** (m/yy) is **6/25 through 12/25** proceed to the next section of this advisory to inspect your unit.

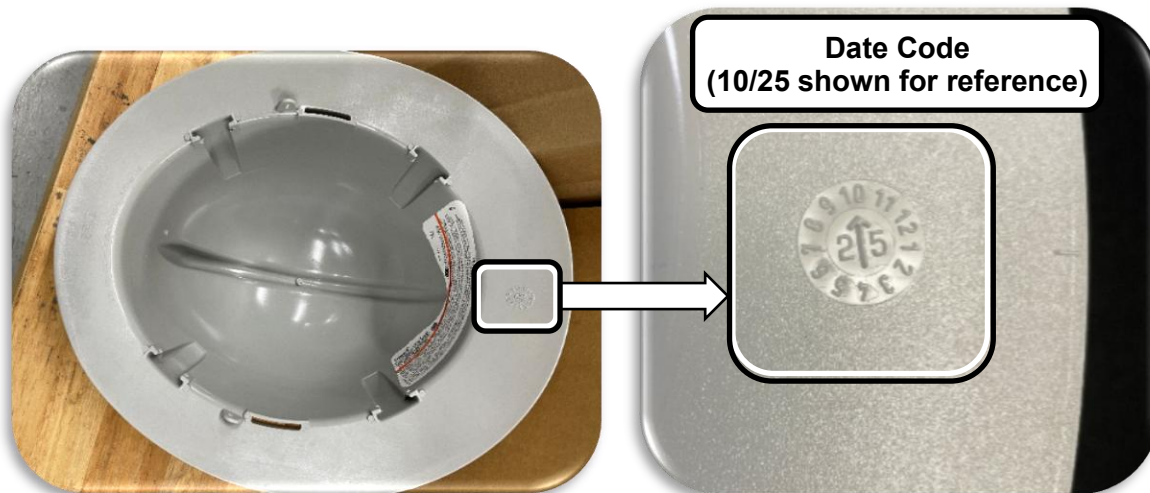


Figure 1: Date Code (underside of brim)

C. Inspecting Your Unit

Inspect the underside of the helmet for a blemish in the area under the lamp bracket. **If there is any blemish present, remove the helmet from service and proceed to the next section to address the affected unit.**

MSA Corporate Center
1000 Cranberry Woods Drive
Cranberry Township, PA 16066
800.MSA.2222
www.MSAafety.com

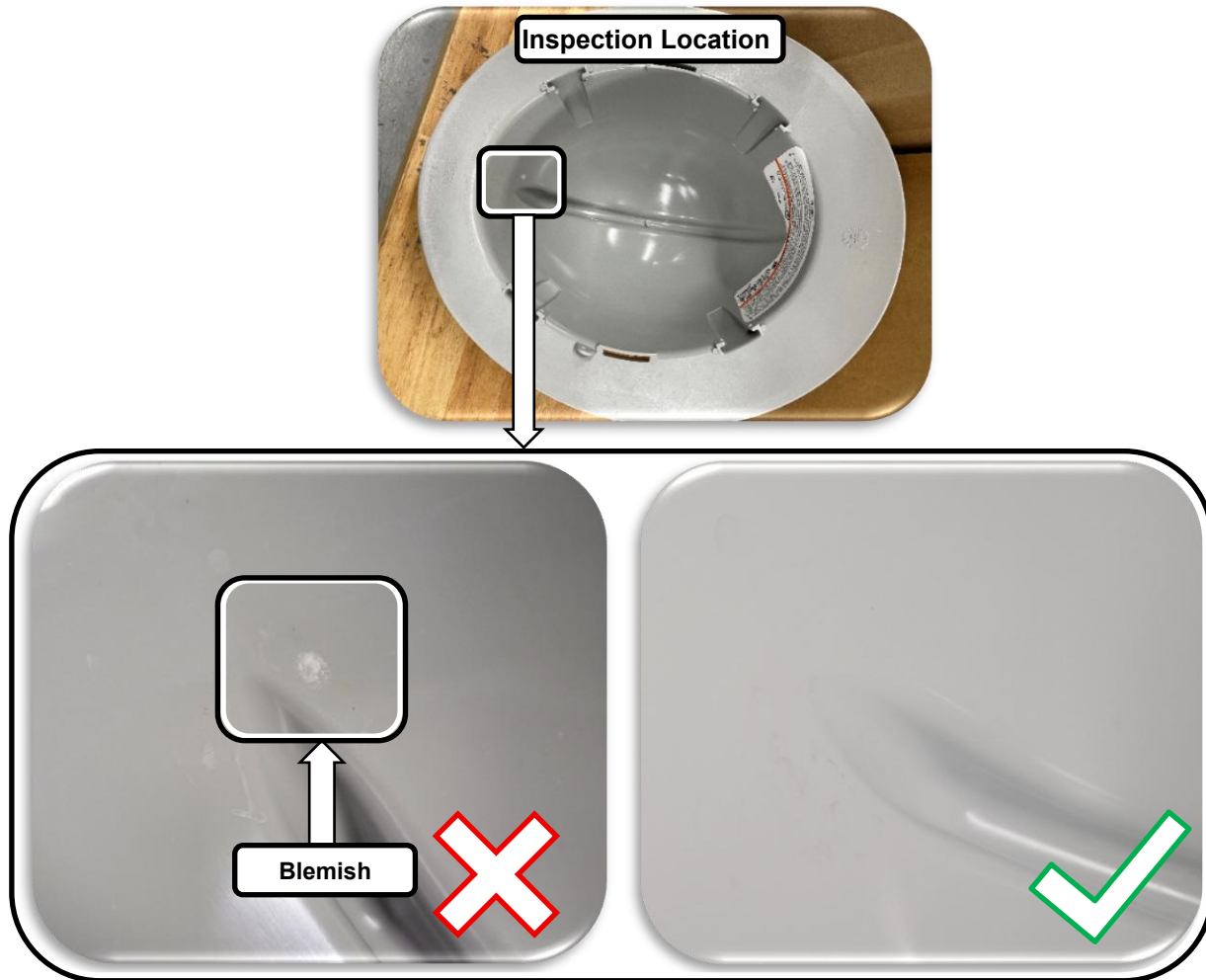


Figure 2: Underside of Helmet under the lamp bracket



D. Addressing Affected Units

Please contact MSA at the details below to make arrangements for replacement of your device. When contacting MSA, please reference this notice and include the date code, helmet characteristics, and corresponding Model Number from Table 1 for each replacement needed.

MSA Corporate Center
1000 Cranberry Woods Drive
Cranberry Township, PA 16066
800.MSA.2222
www.MSAsafety.com

MSA Customer Service Contact Information		
Region	Email	Phone
US and Canada	ProductSafetyNotices@msasafety.com	866-672-0005
Latin America	techsupport.slar@msasafety.com	

or contact your local MSA representative.

Thank you for your continued trust in our products.

Best regards,

Adam Troup
Product Safety Manager